

Cantor Nissel EyeBrid SiH

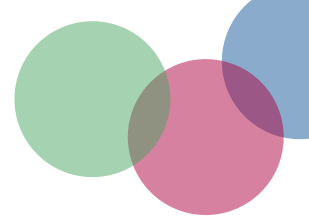
A 6 monthly RGP lens with a soft skirt for both normal and keratoconic eyes

Features

- High Dk RGP centre
- Silicone Hydrogel skirt
- Unique diameter
- Choice of standard or Keratoconus designs
- Choose from 3 available skirts

Material RGP	Contamac Filcon III 4, Optimum extra	Available designs:	
Permeability (Dk)	100 x 10-11	EyeBrid	Large optic zone lens for normal corneas
Material, skirt	Contamac Filcon V3, Definitive	EyeBrid Cone	Small optic zone lens for Keratoconus patients
Water content	50 %	Available skirts	<ul style="list-style-type: none"> • Regular • Flat • Steep
Permeability (Dk)	50 x 10-11		
Base Curve of RGP area (mm)	4.00 to 10.00 (0.05 steps)		
Diameter of RGP area (mm)	8.50		
Total diameter of lens (mm)	14.90		
Power range	-25.00D to +25.00D (0.25D steps)		





Fitting procedure Cantor Nissel EyeBrid SiH

- Full refraction and eye examination
- Keratometry
- Select base curve of spherical RGP (For spherical corneas fit on flattest K to achieve alignment fit)
- Select power as Best Vision Sphere
- Order lens with standard skirt
- USE HIGH MOLECULAR FLUORESCHEIN ONLY TO ASSESS FIT
- Allow lens to settle for at least 30 minutes

Good Fit

- Good centration
- Smooth movement with blink (0.5 to 1.5mm)
- Fluorescein penetrates tear layer between lens and cornea rapidly
- Fluorescein shows alignment fit under RGP area with band of fluorescein at edge of RGP (1.5mm wide) (EyeBrid)
- 3 point alignment with band of fluorescein at edge of RGP (1.5mm wide) (EyeBrid Cone)

Flat Fit

- Lens will be excessively decentred – Order steeper skirt
- Excessive movement > 1.5mm – Order steeper skirt
- Soft skirt flutes – Order steeper skirt
- Fluorescein pattern may show central touch and/or excessive band of fluorescein at edge of RGP – Order steeper base curve

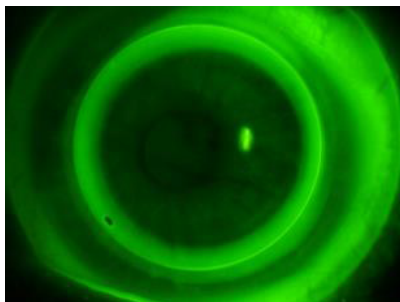
Steep Fit

- Good centration
- Very little movement with blink < 0.5mm – Order flatter skirt
- Lens sticks to cornea – Order flatter skirt and flatter base curve
- Central pooling under RGP – Order flatter base curve

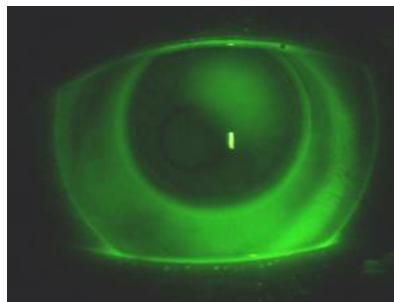
Lens Removal

- Use the upper and lower lids to lift the contact lens edge for removal, DO NOT use the pinch method.

Fluorescein pattern for an optimal fit



EyeBrid



EyeBrid Cone

Recommended care system is Quattro multipurpose solution by Abatron, other multipurpose solutions may cause adverse effects on the lens materials. RGP solutions must not be used.