

Nissel Naturals

A screen printed soft contact lens for cosmetic and prosthetic use

Features

- Spherical and toric designs
- Natural iris tone
- Clear and black pupils
- Limbal ring
- Iris pattern
- Opaque backing

Benefits

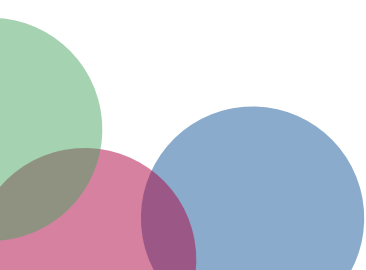
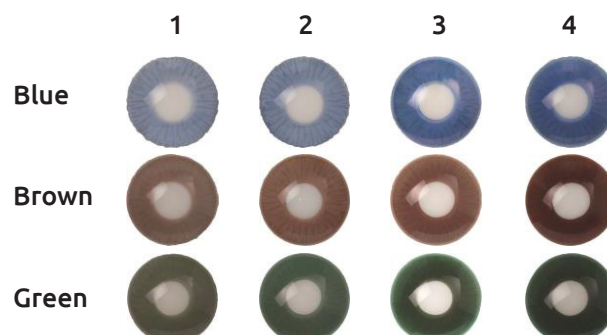
- High water content
- Prosthetic use
- Cosmetic use
- Large specification range

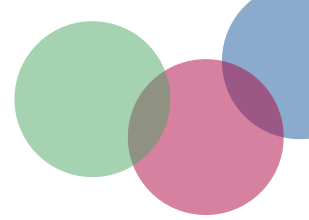
Material	Contamac Filcon II 3	Centre thickness (@ 14.50 -3.00)	0.18 mm
Water content	77 %	Cyl Powers	-6.00DC to -0.75DC (0.25DC steps)
Permeability (Dk)	45 x 10-11	Axis Powers	5° to 180° (5° steps)
Base Curve (mm)*	6.60 to 10.40 (0.20 steps)	Iris Diameters (mm)	11.50, 12.00, 12.50, 13.00, 13.50
Diameter	11.00 - 20.00 mm (0.50 steps)	Clear / Open Pupil (mm)	2.00, 2.50, 3.00, 3.50 4.00, 4.50, 5.00, 6.00
Power range	-30.00D to +30.00D (0.25D steps) <i>Higher powers may be available</i>	Black / Closed Pupil (mm)	2.50, 3.00, 3.50, 4.00, 4.50, 5.00, 6.00, 7.00, 8.00, 9.00

* All Base Curves are available in Diameters from 16.50. Please refer to our Material Parameters sheet for available sizes

Nissel Naturals Colour Chart

Images are intended for representational purposes only





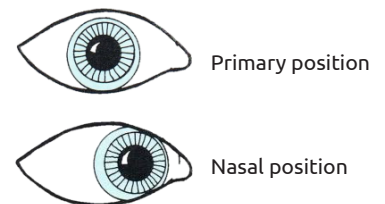
Fitting procedure Nissel Naturals

- Full refraction and eye examination
- Keratometry
- Select diameter required 2-3mm larger than HVID
- Select Base Curve according to corneal curvature, but with a flattening differential relative to the diameter of the lens shown below:

Lens Diameter	Order Base curve flatter than flattest K by:
12.50 mm	0.30 mm – 0.40 mm
13.00 mm	0.40 mm – 0.60 mm
13.50 mm	0.60 mm – 0.80 mm
14.00 mm	0.80 mm – 1.00 mm
14.50 mm and 15.00 mm	1.00 mm – 1.20 mm
15.50 mm and above	1.40 mm – 1.60 mm

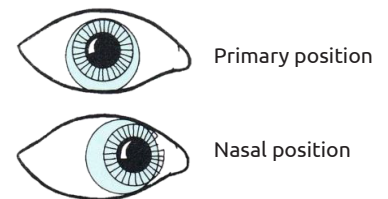
Good Fit

- Comfortable
- Good centration with full coverage of limbus, even in upward gaze
- Adequate smooth movement in all directions of gaze
- Good recovery on push-up test
- Carry out over-refraction and order exchange lens if required



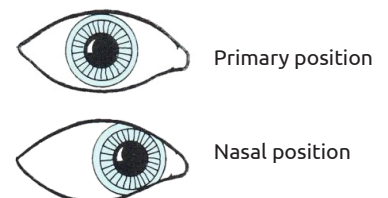
Flat Fit

- May give poor centration
- May give unstable vision
- Can cause discomfort
- Try steeper Base Curve (if available)
- Over-refraction



Step Fit

- Displays inadequate or no movement
- Resists push up test with lower lid
- Can cause blanching
- Lens removal may be difficult
- Try flatter Base Curve (if available)
- Over-refraction



Recommended care system is Quattro multipurpose solution by Abatrol, Hydrogen peroxide systems may be used. Other multipurpose solutions may cause tint to fade.

