

Nissel Custom

A screen printed soft contact lens with additional manual enhancement

Features

- Iris enhanced to match digital image
- Clear and black pupils
- Opaque backing
- Offset pupil / iris available

Benefits

- High water content
- Spherical and toric designs
- Prosthetic use
- Large specification range
- Up to 2 fitting lenses supplied at no charge

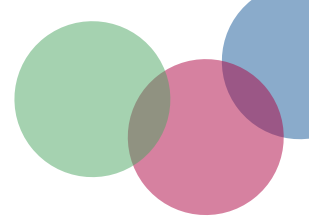
Material	Contamac Filcon II 3	Centre thickness (@ 14.50 -3.00)	0.12 mm
Water content	77 %	Cyl Powers	-6.00DC to -0.75DC (0.25DC steps)
Permeability (Dk)	45 x 10-11	Axis Direction	5° to 180° (5o steps)
Base Curve*	6.60 to 10.40 (0.20 steps)	Iris Diameters (mm)	11.50, 12.00, 12.50, 13.00, 13.50
Diameter	11.00 - 20.00 mm (0.50 steps)	Clear / Open Pupil (mm)	2.00, 2.50, 3.00, 3.50 4.00, 4.50, 5.00, 6.00
Power range	-30.00D to +30.00D (0.25D steps) <i>Higher powers may be available</i>	Black / Closed Pupil (mm)	2.50, 3.00, 3.50, 4.00, 4.50, 5.00, 6.00, 7.00, 8.00, 9.00

* All Base Curves are available in Diameters from 16.50. Please refer to our Material Parameters sheet for available sizes

Example lens enhancements

Images are intended for representational purposes only





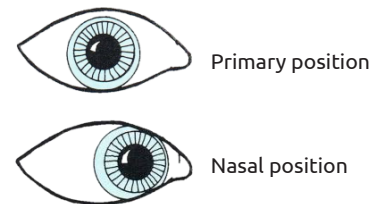
Fitting procedure Nissel Custom

- Full refraction and eye examination
- Keratometry
- Select diameter required 2-3mm larger than HVID
- Select Base Curve according to corneal curvature, but with a flattening differential relative to the diameter of the lens shown below:

Lens Diameter	Order Base curve flatter than flattest K by:
12.50 mm	0.30 mm – 0.40 mm
13.00 mm	0.40 mm – 0.60 mm
13.50 mm	0.60 mm – 0.80 mm
14.00 mm	0.80 mm – 1.00 mm
14.50 mm and 15.00 mm	1.00 mm – 1.20 mm
15.50 mm and above	1.40 mm – 1.60 mm

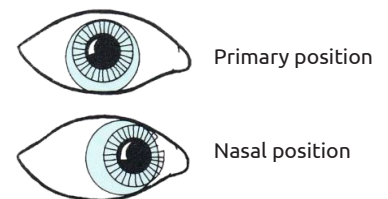
Good Fit

- Comfortable
- Good centration with full coverage of limbus, even in upward gaze
- Adequate smooth movement in all directions of gaze
- Good recovery on push-up test
- Carry out over-refraction and order exchange lens if required



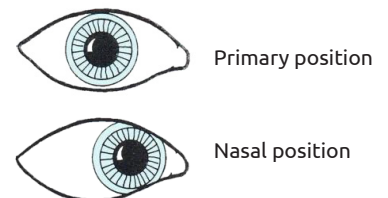
Flat Fit

- May give poor centration
- May give unstable vision
- Can cause discomfort
- Try steeper Base Curve (if available)
- Over-refraction



Steep Fit

- Displays inadequate or no movement
- Resists push up test with lower lid
- Can cause blanching
- Lens removal may be difficult
- Try flatter Base Curve (if available)
- Over-refraction



When happy with the fit and vision of the lens, the lens is returned to Cantor & Nissel for enhancing. Please send a high resolution digital image (jpeg) of the eye to be matched. This should be taken with a digital camera in good light; a slit lamp camera should not be used. Images of inferior quality will be rejected and will require re-submitting.

Recommended care system is Quattro multipurpose solution by Abatron, Hydrogen peroxide systems may be used. Other multipurpose solutions may cause tint to fade.

